

Charlier Associates, Inc.

PROJECT EXPERIENCE

RAIL ORIENTED DEVELOPMENT: STRATEGIES AND TOOLS TO SUPPORT PASSENGER RAIL Denver, Colorado (completed 2001)

To help communities plan for a statewide passenger rail system, Charlier Associates developed a Best Practices Handbook on the land use patterns and transportation system characteristics most supportive of passenger rail for the Colorado Department of Transportation.

The Best Practices Handbook included a literature review of current research on the topic, a description of the desirable land use and transportation characteristics and an implementation plan, which was developed in association with Clarion Associates. The Handbook was intended to be a comprehensive guide for both public and private sector representatives in planning for a statewide rail system.

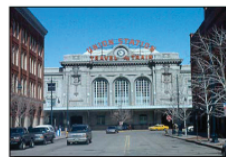
The project also included a review of the key land use, transportation and design characteristics of successful North American passenger rail systems. This Peer Review included an analysis of the CalTrain system in Northern California, a Metra line in the Chicago Metropolitan Area and two Canadian systems, in British Columbia.

In an effort to maximize the ability of CDOT to distribute this Best Practices Handbook to communities throughout Colorado, it will be published for the internet, in addition to a hard-copy format, allowing users to navigate the Handbook contents through links and other innovative tools.

CLIENT: Colorado Department of Transportation
CONTACT: Intermodal Branch
(303) 757-9795



RAIL-ORIENTED DEVELOPMENT: STRATEGIES AND TOOLS TO SUPPORT PASSENGER RAIL



FINAL DRAFT
CDOT-DTD-R-2001-19
March 2002



Colorado Department of Transportation
Research Branch

